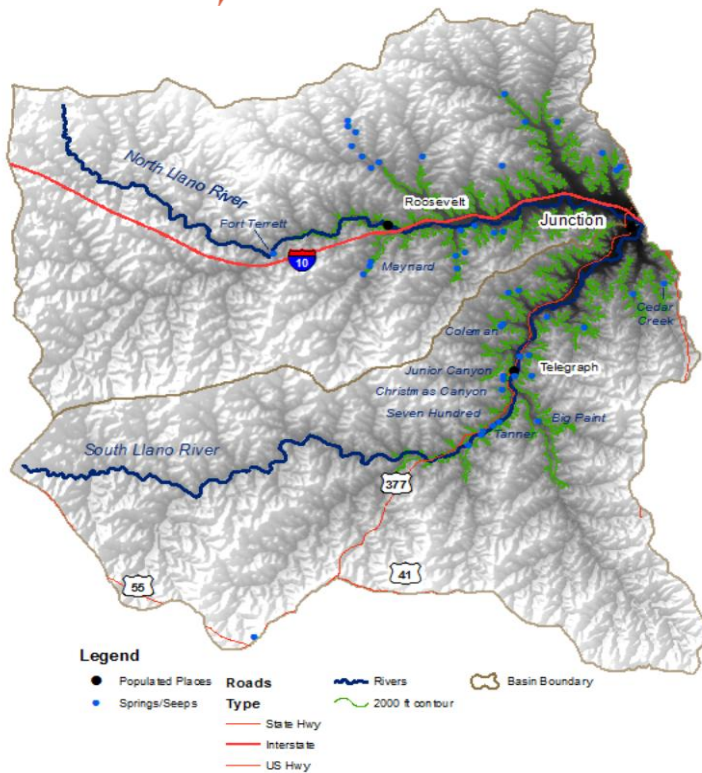


Watershed Week in Review

Llano River Watershed Alliance



Springflow to the Llano

A reader asked this week, “How can we tell how much these rains have helped springflow to the Llano?”

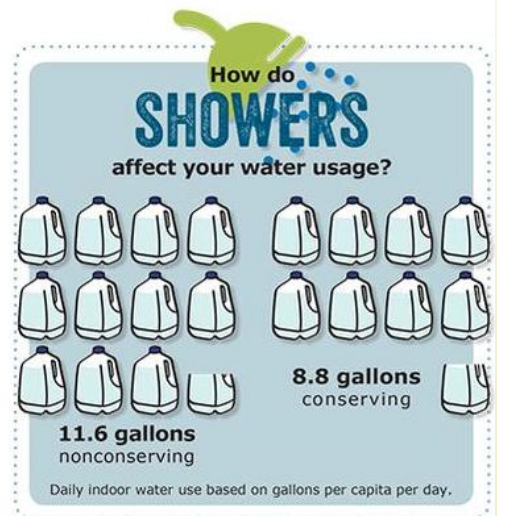
It is impossible to know how much comes from each of the springs in the watershed. The above map shows springs in the North and South Llano, but there are springs that are not mapped, including those in the riverbed.

See page 3

Time to think about that showerhead

A water efficient showerhead uses almost 3 gallons less water per shower than your old showerhead.

According to the Texas Water Development Board, that equates to more than 3,000 gallons/year in savings.



Weekend Family Events at South Llano River State Park

Join our friends at South Llano River State Park this weekend for some fun events.

To keep up with the latest activities at the park, check out their [Facebook page](#).

“Not So Creepy Critters”

Saturday, October 31st, 12:00 pm - 2:00 pm

Held at the day use area

(take road across from Park Headquarters, follow to the end)

Join park staff and friends as they present different “creepy” animals, such as owls, bats, spiders, and snakes, including displays and live animals.

Come find out the truth about these animals, the part they play in nature, and why they don’t deserve their bad reputation!

Don’t forget to wear your costume for our costume contest!

Children must be accompanied by an adult.



Fawn Trail Nature Hike

Sunday, November 1st, 9:00 am - 11:00 am

(Don’t forget to set your clocks back 1 hour on Saturday night)

Meet at the Fawn Trail parking lot (behind Park Headquarters)

Join us for a 3-mile, moderate hike as we find out more about the plants and animals of the Hill Country. Parts of this hike are steep and rocky, and others are more flat. Good walking shoes, sun protection, and plenty of drinking water are recommended. All ages welcome! No pets, please.

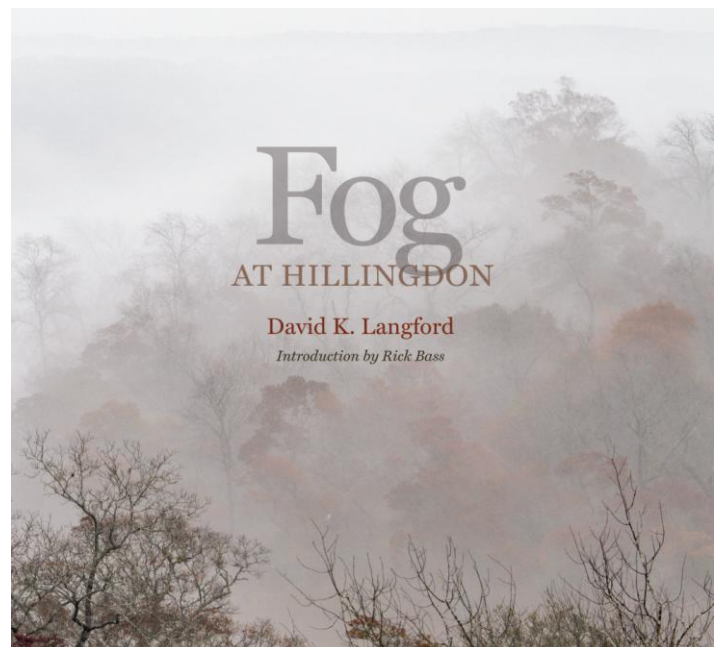


Capturing Land Stewardship in Pictures

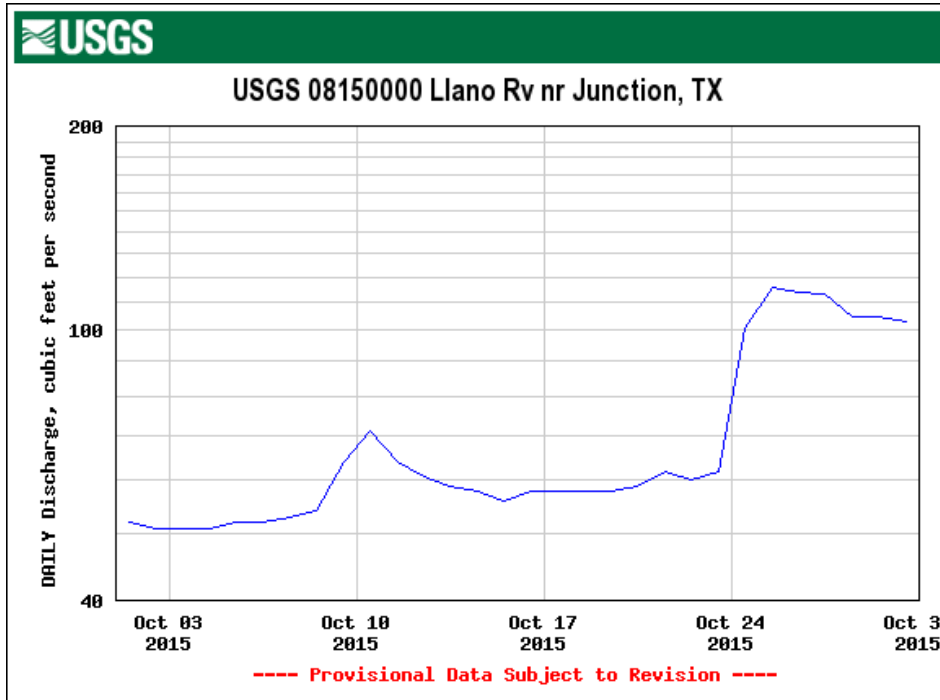
Local photographer and land stewardship advocate, David Langford, has released his latest book, [Fog at Hillingdon](#).

It is a photographic look at fog at our family’s seven-generation Texas Hill Country ranch, and an exploration of why land stewardship is important to all.

David is a long-time supporter of the Alliance and a [Patron Sponsor](#). Congratulations and thank you, David.



Springflow to the Llano (continued)



An estimate of total springflow (also known as baseflow) can be obtained by looking at the hydrograph for nearby gages for a period of time following a rain event.

This hydrograph for the Llano River near Junction shows the flow of the river this month. Prior to the rains around October 10th, the flow was about 50 cfs. Following that rain, the flow of the river leveled off at about 58 cfs. Therefore, we can estimate that springflow/baseflows

to the river increased about 8 cfs following the rain.

The rains last week above Junction were fairly slow and steady. Much of it soaked into the ground and provided a nice jump in the baseflow – almost 45 cfs to just over 100 cfs, close to normal flows for the river this time of year.

Also evident from this hydrograph, most of the Llano watershed missed out on the amazing rainfall totals along I-35 yesterday. Only areas in the watershed along Sandy Creek saw rainfall totals over the past 48 hours greater than 2 inches. In fact, Sandy Creek is flowing more than 1,000 cfs this morning, while the Llano at Llano is at 165 cfs.

‘Tail’ of the Llano Castaway

Crews from the Alliance, Llano River Field Station, Texas Parks and Wildlife and Lady Bird Johnson Wildflower Center continued their efforts to control elephant ear, an invasive species, this week on the Llano. During the course of their efforts, this little guy was saved from drowning by one of the crew near the I-10 Bridge.

Efforts have yet to be successful to return him to his old home, but the good news is that he has an offer for a new home if his old one can't be found.

